

90W Solar LED PIR Flood light
Model SFSOLFLPIR90HPC-LI



- PIR Motion sensing
- Highpower & Robust
- Lithium Technology
- Alu Zinc / Stainless Steel
- Different Colour Options
- Made in South Africa

The HPC 90w Motion sensing Solar flood light is a compact high power Solar LED flood light design a motion sensor with Lithium battery technology.

This model is supplied with a 90w Philips SMD LED Module with a lumen output of 160lm/w.

Lighting parameters are based on 12.5 hours per night to operate 365 days per year with a 2 day reserve in Smart power

L100% power once the sensor is activated for a period of 20 - 30 seconds dimming back to 35%

PIR motion sensor is will detect any movement within an 8 meter Radius with a detection zone of 60 degrees from the sensor which will span over a 35 - 40m2 area

Light distribution options on the modules are 30, 45, 60, 90 & 110 degrees or with an Asymmetrical lens option.

Battery requires 4 - 5 hours to replenish.

Our standard LED brand options are, Philips or Cree SMD LEDs.

Standard warranties on components

LEDS Module 5 years

Electronics 3 years

Solar panels 25 years

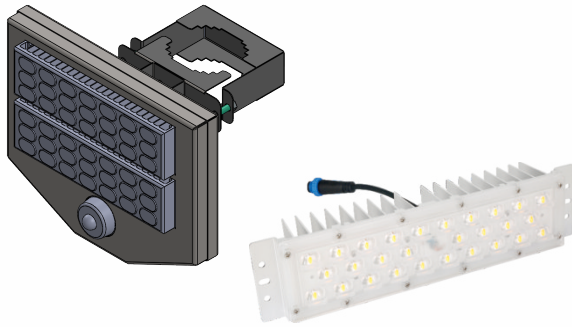
Poles 10 years workmanship

SPECIFICATIONS

LIGHT	POWER	90W
	LED	Philips Lumileds
	IP RATING	IP66
	FLUX @ CCT 5000k	14400 lumen
	WARRANTY	5 years
	CRI	70 / 80
	OPTICAL CONTROL	PMMA Lenses
	AVERAGE LIFE SPAN	10 years
	OPERATING TEMPERATURE	-30 Deg~ + 50 Deg
	MOUNTING HEIGHT	7m above ground
	BEAM ANGLE	30 , 60, 90 & 110 degrees
	POLE TO POLE DISTANCE	35-40 meters
BATTERY	LITHIUM FERRO PHOSPHATE	LIFEPO4
	VOLTAGE	12.8V
	CAPACITY	1228Wh
	CYCLES	2000 - 4000
SOLAR PANEL	RATED POWER	100w Mono
	VOLTAGE AT MAX POWER	38,3V
	CURRENT AT MAX POWER	4.7Amp
CONTROLLER	CHARGE TYPE	MPPT Smart 365
	DIMMING	Intelligent IC - 100 / 70 / 50 / 30
	DAY NIGHT SENSORS	Integrated into controller
	LIGHTING PARAMETERS	4 stage Programmable
	ELECTRICAL PROTECTION	IP 68, Temperature compensation
		Overheating, overcharging and
Over discharging protections		
BRACKETING AND BATTERY BOXES	Alu Zinc and powder coated, Manufactured in an SABS approved facility with ISO 9001 3CR12 Stainless steel optional for coastal environments	
POLE	Opt: Galvanized steel , 8m pole with flood light collar - 101 - 89mm	
Powder Coating	Optional	

90W Solar LED PIR Flood light Model SFSOLFLPIR90HPC-LI

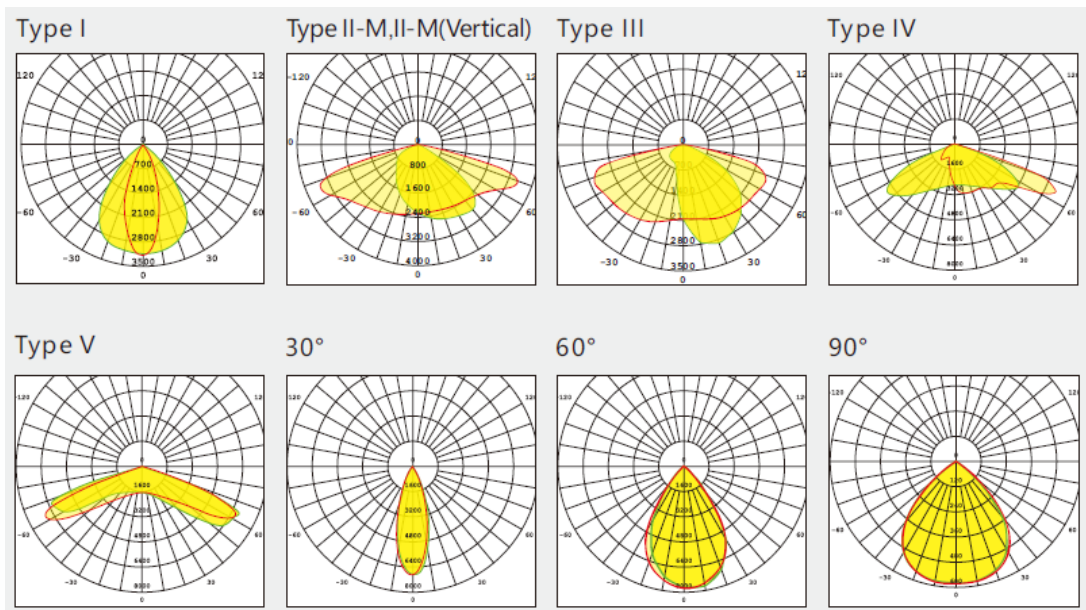
LED Module



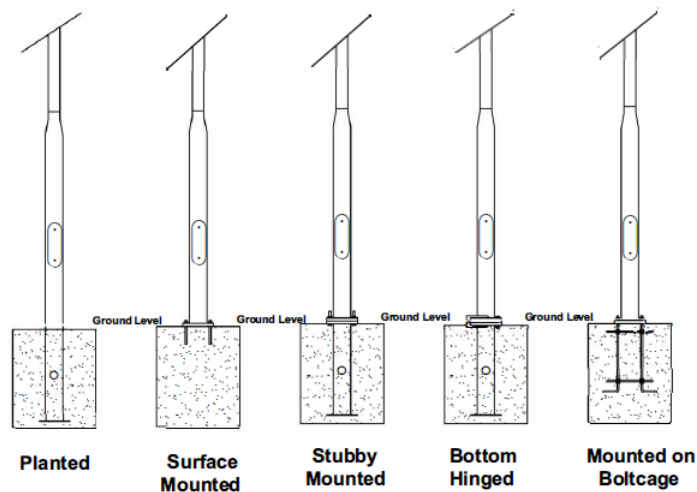
Battery Technology- 3.2V Lithium LIFEP04 Cells



LENS Options



Pole mounting options



Components certifications

LM-79 LM-80 TM21 **IP66 IP68**  



LOCALLY MANUFACTURED LED AND SOLAR LED LIGHTING