



## PARAMETERS



Light model	Light Power	Mono Solar Panel	Battery	Lumen output	Recommended Installation Height	Recommended Mounting Distance
SFSOLMPT30	30W	35W	3.2V 45AH LiFePO4	3000lm	2-4m	30m



LED chip - Osram 3030 - LM80



5-7H charging time



LiFePo4 battery > 2000 cycles, super long life

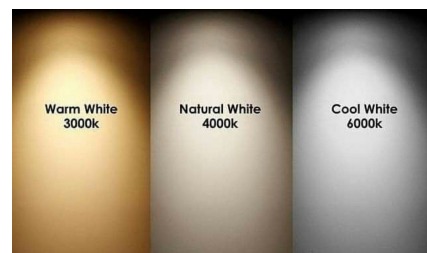


1hr 100%, 1.5Hrs 80%, 1.5 hours 60%, 3hrs 40%, 5 hrs 20%

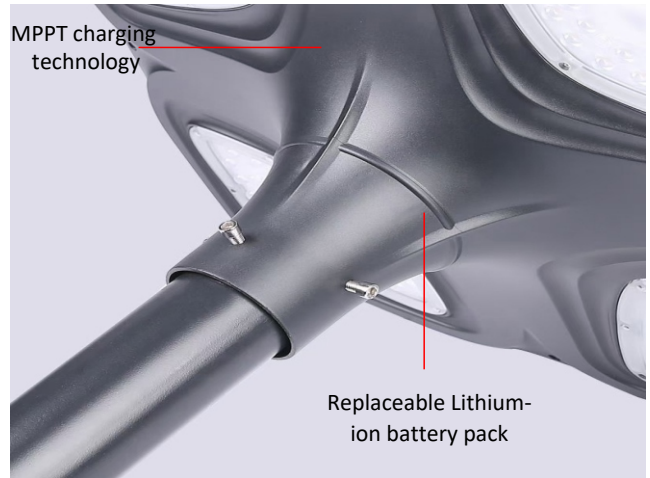
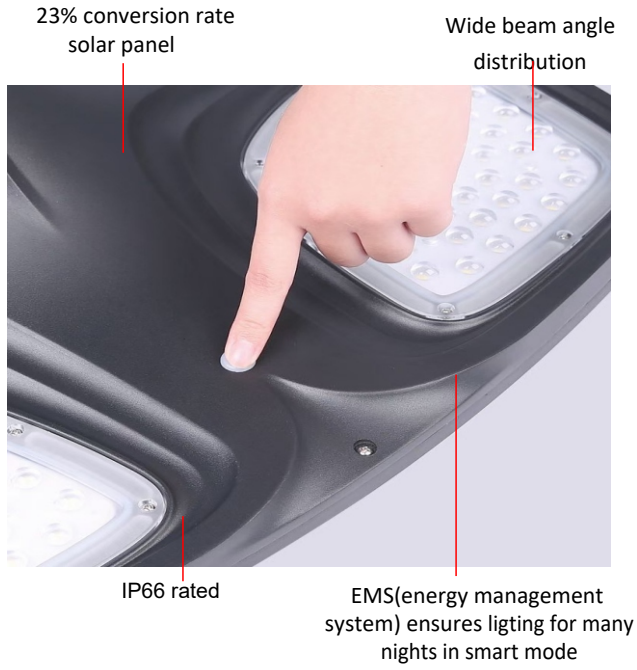


Battery backup: Operational for for 3 nights in the factory default mode (PRESET) after battery is fully charged.

### Color temperatures



## Product features



## Product size

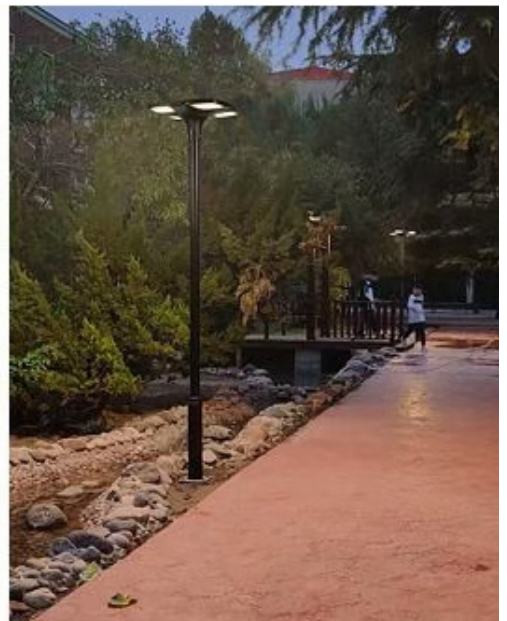
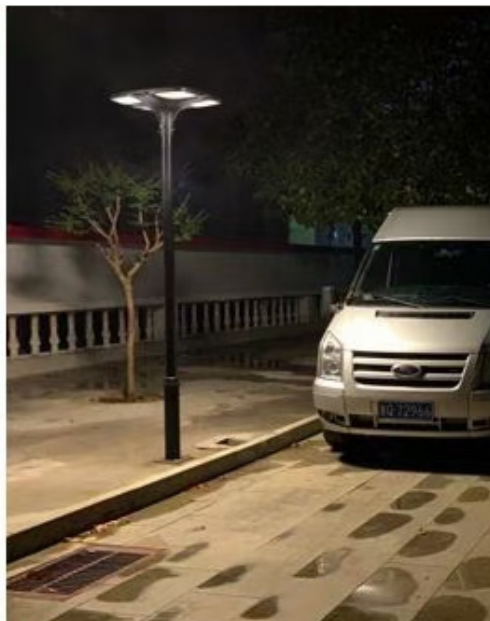


PACKING DIMENSIONS

600L X 600W X 280H (CM)  
Weight 9.6Kgs

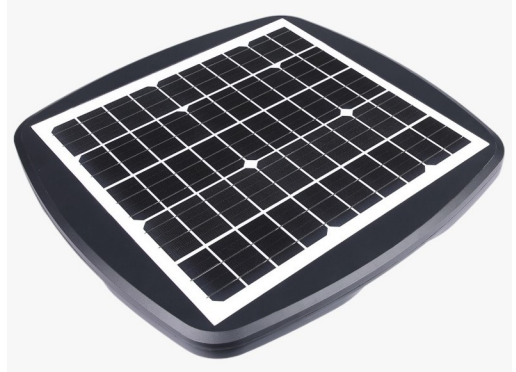
Spigot entry  
76mm OD

## Applications





## Time Control Model:



2 hours 100%, 5 hours 50%, 5 hours 20%

## Motion Sensing Model:



First 3 hours 100%, 9 hours dimmed down to 25% and once sensor is activated increasing to 80% for 30 seconds